

**MaxiLED**  
Lighting



**MaxiEDGE**

# MaxiEDGE



## Key Features

- 512 DMX Controllable
- 48VDC Data over Power 2 wire system
- Single strand runs as long as 330 ft (100m)
- IP66

## Description

Our IP66 MaxiEDGE DMX controllable fitting is perfect for window edge and corridor lighting. With a 170 degree viewing the MaxiEDGE casts a sharp, precise beam of light around the surface area of window/door reveals or corridors. Manufactured from quality materials and incorporating our Patented 2 wire data over power technology giving full DMX control down the 2 power wires makes it the simplest to install and most cost effective product of its type in the market place today.



# MaxiEDGE

## Specifications

Power input: **48VDC**

Watts per unit: **4.8w**

LED Current: **200ma**

Lumens RGBW Clear Glass (Full On): **150**

Lumens Intelligent white (Full On): **250**

Beam angle: **170° x 5°**

## Features



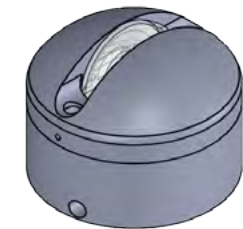
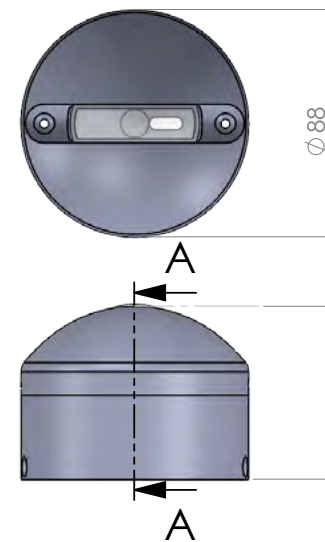
## Lens Options

170° x 5°

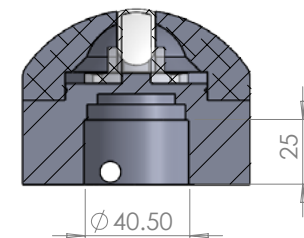
## Finishes



## Dimensions



SECTION A-A



## Accessories

Recessed  
Sleeve

## Certifications



**MaxiLED**  
Lighting

# MaxiEDGE



MaxiLED Lighting

Unit 2, Farrington Place, Rossendale Road Ind. Est. Burnley, Lancashire. UK. BB11 5TY  
T: +44 (0)1282 448086 E: [sales@maxiledlighting.com](mailto:sales@maxiledlighting.com) Web: [www.maxiledlighting.com](http://www.maxiledlighting.com)